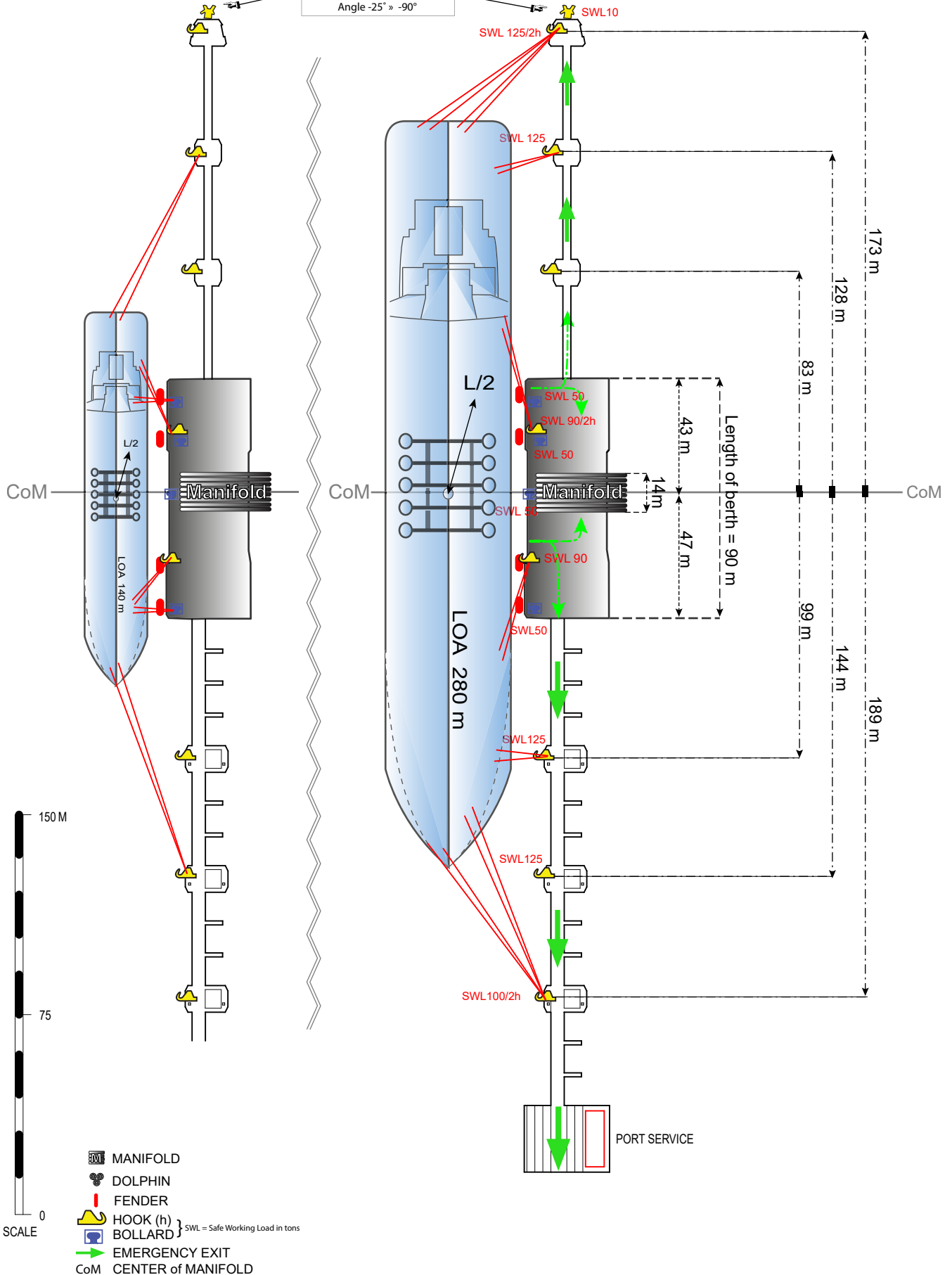


BERTH 800

| | | | |
|---------------------|--------|-------------------------|--------------|
| MAX DRAUGHT (MW): | 17.0 M | MAX/MIN MANIFOLD HEIGHT | |
| MAX LOA: | 280 M | ABOVE WATERLINE (MW): | 25.0 / 4.0 M |
| MAX BREADTH: | 60 M | QUAY DECK HEIGHT (MW): | 4.5 M |
| UKC: | 0.5 M | MAX BCM/SCM: | 169 M |
| MIN PARALLELL BODY: | 50 M | MAX DISPLACEMENT: | 250,000 T |
| MIN FREEBOARD (MW): | 3.7 M | MAX SPEED: | 0.05 M/S |

For Tug/Fire boat only.
Downward vertical angle only.
Angle -25° » -90°



BERTH DIRECTION
024° / 204°

MOORING PLAN TORSHAMNEN BERTH 800

REV. DATE / DATE
2020-02-12

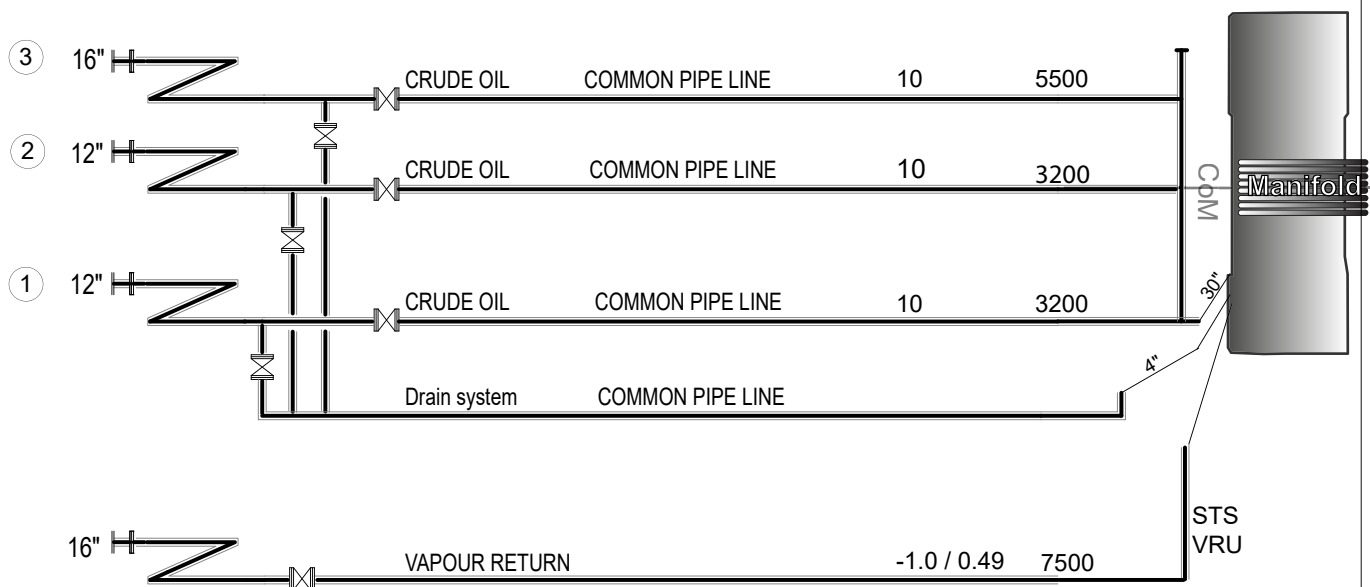
DRAWN
MAFLOBE



SCALE

BERTH / DRAWING NO
BERTH800

APPROVED BY
CL

| HARD ARM No. | SIZE OF CONN. | PRODUCT | COMPANY | MAX PRESSURE BAR | MAX LOADING/DISCHARGING CAPACITY M3/H |
|--------------|---------------|---------|---------|------------------|---------------------------------------|
|--------------|---------------|---------|---------|------------------|---------------------------------------|



- ① = Hard arm No.
-  = Hard arm symbol
-  = Hose symbol

Bunkers available by barge
Fresh water available



BERTH DIRECTION
024° / 204°

MANIFOLD ARRANGEMENT TORSHAMNEN BERTH 800

REV. DATE / DATE
2021-02-04

DRAWN
MAFLOBE

SCALE
/

BERTH / DRAWING NO
BERTH800

APPROVED BY
CL